

VILLAGE OF SALADO, TEXAS

0.200 MGD WASTEWATER TREATMENT PLANT

ADDENDUM NO. 4

November 10, 2017

The construction plans and specifications for the Village of Salado, 0.200 MGD Wastewater Treatment Plant project, on which submittals are to be received until 3:00 P.M. on Tuesday, November 14, 2017 are hereby modified as follows:

I. GENERAL

1. The deadline for receiving request from manufacturers to be considered as approved equals expired at Noon on Wednesday, November 8, 2017. Review of all requests received prior to the deadline have been completed. No additional request from manufacturers will be accepted by the Engineer. All manufacturers added as approved equal by addenda are subject to meeting the requirements of the specifications and does not imply that exceptions to the specification requirements are allowed. Unless stated otherwise, manufacturers that were not listed as approved equal in the specifications, drawings and addenda are not precluded from submitting quotes/bids on equipment and materials specified for this project. It shall be the responsibility of the Contractor/Bidder to determine if equipment and material quotes/bids fully comply with the intent of the specifications and drawings. Any and all cost for deviations including engineering adjustments is the responsibility of the Contractor.
2. Contractor will not be required to obtain a Building Permit from the Village of Salado for this Project.
3. Contractor shall obtain an Electrical Construction Permit from the Village of Salado for this Project. The Village of Salado will waive all fees associated with obtaining this permit.

II. SPECIFICATIONS (GENERAL, MECHANICAL AND STRUCTURAL)

1. Reference Technical Specification M1. In Section M1.01 add the following paragraph:
 - B. Pumps shall be supplied with variable frequency drives and harmonic filters by pump supplier. Variable frequency drives and harmonic filters shall be furnished per electrical specifications EL06 and EL07.
2. Reference Technical Specification M2. In M2.16 add the following paragraph:
 - O. Provide spare MicroMod controller as specified in above paragraphs A.-N.
3. Refer to Technical Specifications Section G12- SLIDE GATES AND WEIR GATES. Slide Gates and Weir Gates shall be self- contained with yoke mounted hand wheels.

III. SPECIFICATIONS (ELECTRICAL RELATED)

1. Reference Technical Specification EL06 – Variable Frequency Drives.

a. In Section 1.01 add the following paragraph:

C. Variable frequency drives shall be furnished by pump supplier with submersible pumps for Influent Lift Station Pumps reference mechanical specification M1.

b. In Section 2.01 B. second sentence delete “positive displacement pumps” and replace with “centrifugal pumps”.

2. Reference Technical Specification EL07 – Active Harmonic Filters. In Section 1.01 add the following paragraph:

C. Harmonic filters shall be furnished by pump supplier with submersible pumps for influent Lift Station Pumps reference mechanical specification M1.

3. Reference Technical Specification EL10– Instrumentation Section 2.04. Add the following paragraph:

O. Provide spare MicroMod controller as specified in above paragraphs A.-N.

4. Reference Technical Specification EL12– SCADA Systems 1.2 B. Add the following to the list of integrators:

6. BLTI – Tomball, Texas

IV. PLAN SHEETS (GENERAL AND MECHANICAL RELATED)

1. Refer to Sheet G-01. Add Sheets S-71 – TYPE “305” ALTERNATE CANOPY FRAMING PLAN/DETAIL and S-72 – TYPE “404” ALTERNATE CANOPY FRAMING PLAN/DETAIL to the Index of Sheets. The Contractor may substitute the pre-fabricated canopies with built in place canopies. Attached are additional Sheets S-71 and S-72 which include details for built in place canopies.

2. Refer to Sheets G-06 and G-07. All buried valves in the Potable and Plant Water Lines shall have a minimum 6” PVC Riser Pipe with a Cast Iron Valve Box Lid.

3. Refer to Sheet M01-Influent Lift Station. The APCO Series 400 Valves shown in the detail on the lower right of the sheet shall be sewage combination air and vacuum release valves.

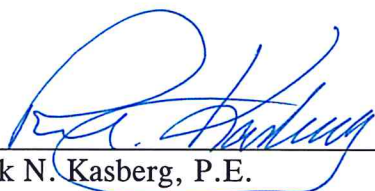
4. Refer to Sheet M-08 – Blower Pad. Check valves will be required in the discharge piping for each blower for a total of 3 check valves. Check valves shall be installed between the butterfly valve (H) and expansion joint (I) shown in Section B-B on Sheet M-08. Butterfly valves will be required on both the inlet and discharge piping for each blower for a total of 6 butterfly valves. Expansion joints will only be required on the discharge piping as shown on Sheet M-08 for a total of 3 expansion joints.

V. PLAN SHEETS (ELECTRICAL RELATED)

1. Refer to the Canopy Details 305 and 404 shown on Sheets EL 20 and EL 21 respectively. The Contractor may substitute the prefabricated canopies with built in place canopies. Attached are additional Sheets S-71 and S-72 which include details for built in place substitute canopies 305 and 404.

VI. BID SUBMITTAL

1. Bidders shall acknowledge receipt of this Addendum in the space provided in the proposal and on the outer envelope of their bid.



Rick N. Kasberg, P.E.
Kasberg, Patrick & Associates, LP
One South Main
Temple, Texas 76501

11-10-17

Date

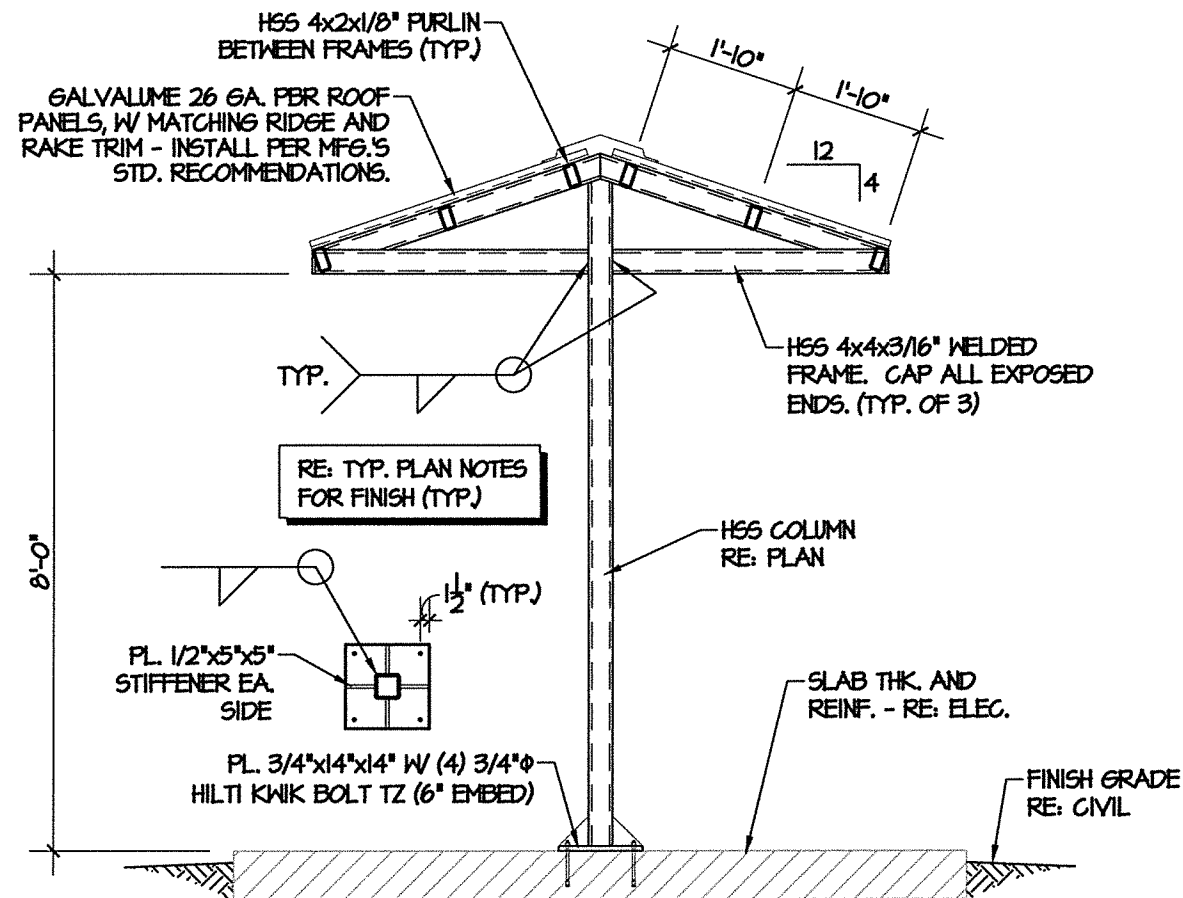


TYPICAL PLAN NOTES

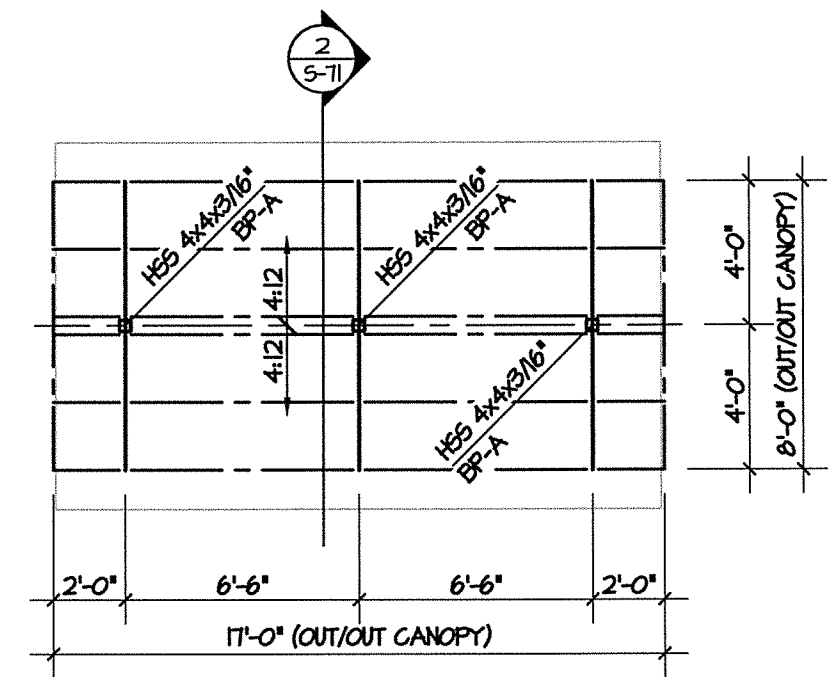
1. REFER TO SHEETS S-01 - S-14 FOR STRUCTURAL NOTES.
2. VERIFY ALL DIMENSIONS, AND EXACT SIZE AND LOCATION OF ALL EQUIPMENT, ELECTRICAL DEVICES, AND SIMILAR ITEMS WITH MEP PLANS PRIOR TO ERECTING STEEL. NOTIFY ENGINEER OF DISCREPANCIES.
3. ALL STEEL SHALL BE HOT DIP GALVANIZED.
4. ALL DISCONTINUOUS EDGES OF METAL ROOFING SHALL BE SUPPORTED. PROVIDE ADDITIONAL FRAMING AT OPENINGS WHERE REQUIRED AS DIRECTED BY ENGINEER.
5. FAILURE TO COMPLY WITH THESE NOTES, THE PLANS, AND SPECIFICATIONS MAY RESULT IN THE REMOVAL AND REPLACEMENT OF WORK AT CONTRACTOR'S EXPENSE.

TYPICAL PLAN LEGEND

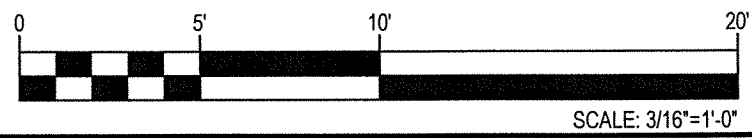
- STEEL FRAME
 - - - STEEL PURLIN
 - ⊙ X/5XX DETAIL NUMBER
 - ⊙ SECTION MARK
 - ⊙ SHEET NUMBER
- U.N.O. = UNLESS NOTED OTHERWISE
T.O.S. = TOP OF STEEL (BOTTOM OF DECK)



2 CANOPY SECTION
SCALE: 3/8" = 1'-0"



1 FRAMING PLAN
SCALE: 3/16" = 1'-0" (1 REQUIRED)



THE SEAL APPEARING ON THIS DOCUMENT WAS AUTHORIZED BY JAMES R. WINTON, P.E. #68190 NOVEMBER 9, 2017 ORIGINAL SIGNED COPY IS ON FILE AT WINTON ENGINEERING, INC.



KASBERG, PATRICK & ASSOCIATES, LP
CONSULTING ENGINEERS
TEMPLE, TEXAS 76501

VILLAGE OF SALADO, TEXAS
0.200 MGD WASTEWATER TREATMENT PLANT
TYPE "305" ALTERNATE CANOPY
FRAMING PLAN / DETAIL

1	11/9/17	ADDENDUM NO. 4	JPK
NO.	DATE	REVISION	BY
© 2017 Kasberg, Patrick & Associates, LP		Plot Date: Nov 10, 2017 - 9:34am	
KPA Firm Registration Number F-510		Plotted By: JARED	

PROJECT NO.	2016 - 103
DRAWN BY	Jared P. Kelm
DESIGNED BY	Jim Winton, P.E.
APPROVED BY	Jim Winton, P.E.
DATE	11/9/17

SHEET NO. **S-71**
OF 1

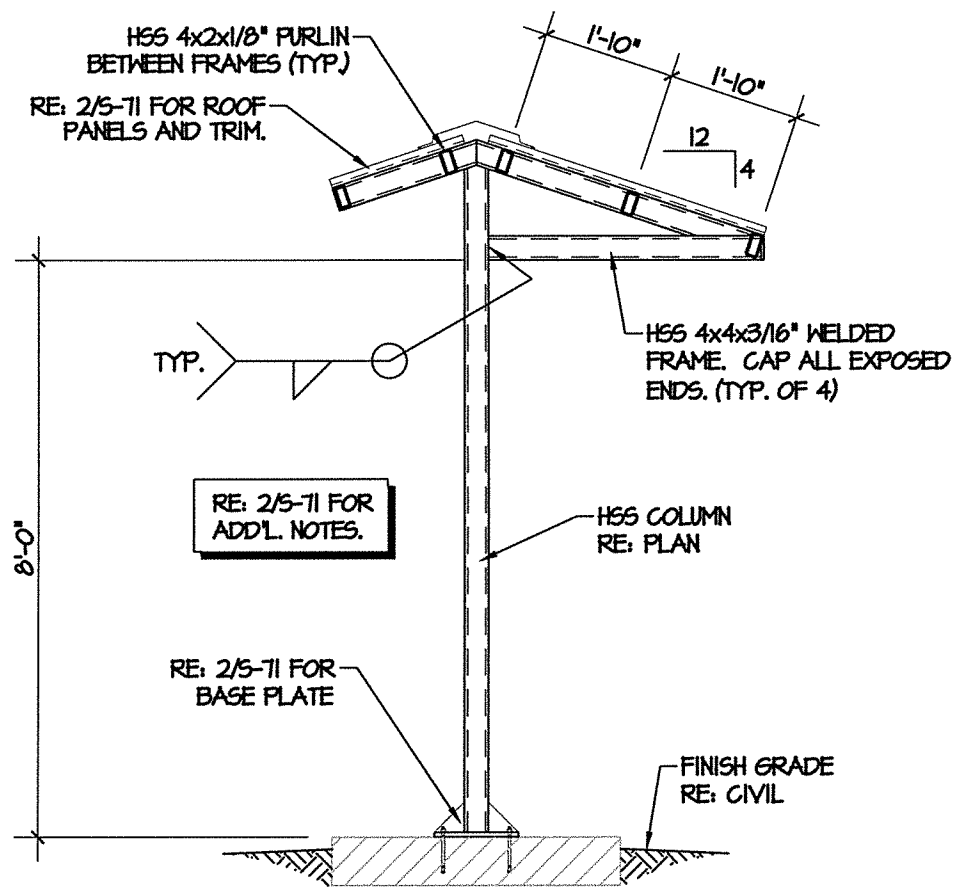
Drawing: Y:\Lofiles\2016-038_Salado\WTP\03_Plan_Engineering\Drawings\Construction\2016-038_S-71.dwg

TYPICAL PLAN NOTES

1. REFER TO SHEETS S-01 - S-14 FOR STRUCTURAL NOTES.
2. VERIFY ALL DIMENSIONS, AND EXACT SIZE AND LOCATION OF ALL EQUIPMENT, ELECTRICAL DEVICES, AND SIMILAR ITEMS WITH MEP PLANS PRIOR TO ERECTING STEEL. NOTIFY ENGINEER OF DISCREPANCIES.
3. ALL STEEL SHALL BE HOT DIP GALVANIZED.
4. ALL DISCONTINUOUS EDGES OF METAL ROOFING SHALL BE SUPPORTED. PROVIDE ADDITIONAL FRAMING AT OPENINGS WHERE REQUIRED AS DIRECTED BY ENGINEER.
5. FAILURE TO COMPLY WITH THESE NOTES, THE PLANS, AND SPECIFICATIONS MAY RESULT IN THE REMOVAL AND REPLACEMENT OF WORK AT CONTRACTOR'S EXPENSE.

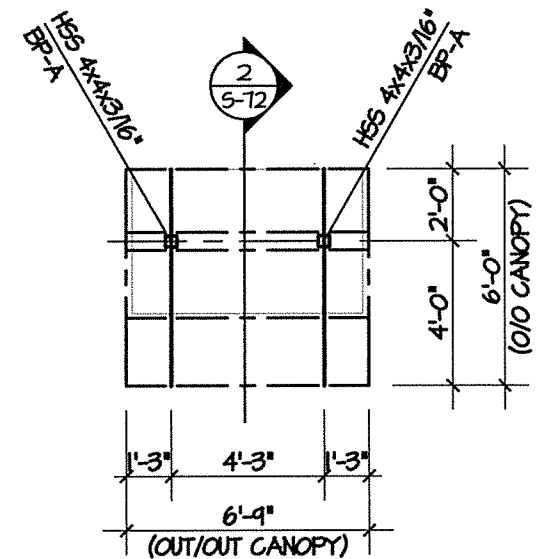
TYPICAL PLAN LEGEND

- STEEL FRAME
 - - - STEEL PURLIN
 - ⬠ DETAIL NUMBER
 - ⊗ SECTION MARK
 - SHEET NUMBER
- U.N.O. = UNLESS NOTED OTHERWISE
T.O.S. = TOP OF STEEL (BOTTOM OF DECK)

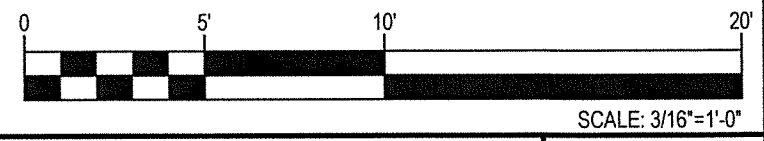


2 CANOPY SECTION
SCALE: 3/8" = 1'-0"

RE: ELECTRICAL PLANS FOR LOCATION AND ORIENTATION.
RE: EL-21 FOR ADD'L. NOTES.



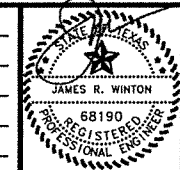
1 FRAMING PLAN
SCALE: 3/16" = 1'-0" (1 REQUIRED)



THE SEAL APPEARING ON THIS DOCUMENT WAS AUTHORIZED BY JAMES R. WINTON, P.E. #68190 NOVEMBER 9, 2017 ORIGINAL SIGNED COPY IS ON FILE AT WINTON ENGINEERING, INC.

1	11/9/17	ADDENDUM NO. 4	JPK
NO.	DATE	REVISION	BY
© 2017 Kasberg, Patrick & Associates, LP		Plot Date: Nov 10, 2017 - 9:34am	
KPA Firm Registration Number F-510		Plotted By: JARED	

PROJECT NO.	2016 - 103
DRAWN BY	Jared P. Kelm
DESIGNED BY	Jim Winton, P.E.
APPROVED BY	Jim Winton, P.E.
DATE	11/9/17



VILLAGE OF SALADO, TEXAS
0.200 MGD WASTEWATER TREATMENT PLANT

TYPE "404" ALTERNATE CANOPY
FRAMING PLAN / DETAIL

SHEET NO. **S-72**

OF **1**

Drawing: Y:\Jobs\2016-038_Salado\WWT\PI03_Plans_Engineering\Drawings\Construction\2016-038_S-71.dwg